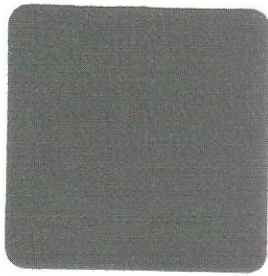


CONCRETE WORLD Industries

RELEASE AGENT COLOURS



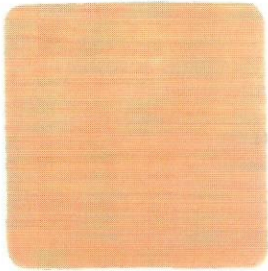
Light Grey



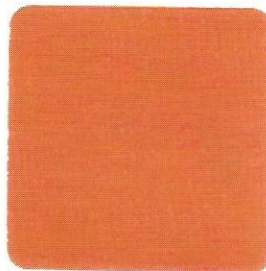
Dark Grey



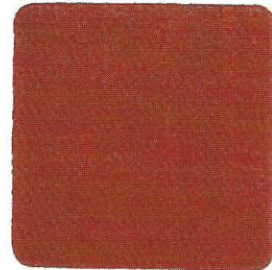
Black



Beige



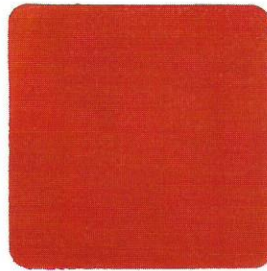
Sand



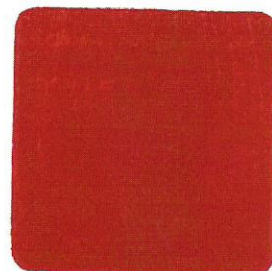
Light Brown



Dark Brown



Terracotta



Uluru Red

Also available in Clear Liquid and Clear Powder release agent.

Release Agent colours on this chart are represented as closely as possible to the finished product. Variations in shading may occur, depending on the job conditions and finishing practice. Colours shown on this chart are specifically formulated for use in installation of Stamped Impression concrete